

KIMTECH*

A person wearing a white surgical cap and a white face mask is shown from the chest up. A large, dense cloud of purple powder is being released from the mask, filling the upper right portion of the frame. The background is dark. The lower portion of the image features a pattern of overlapping hexagons in various shades of gray and purple.

**ARE YOU DRESSED
FOR SUCCESS?**

 **Kimberly-Clark**
PROFESSIONAL*

COMPLEXITY IS SIMPLE AGAIN.

Contamination Control is complex. But it doesn't have to be. With today's standards and regulations, it's challenging to determine where the breach really came from.

Cleanroom garments are one of the primary causes for contamination alerts. Just by adopting the right garment the potential for contamination decreases dramatically.



of operators find cleanroom gowning difficult¹



cleanroom operators report being unsure of garment sterility because of packaging.

Just one cleanroom contamination event can be catastrophic for your company. The average cost of managing contamination events at a site is \$3.1 million² over the course of a year.

To avoid contamination we must look for its source:



People are the #1 cause of contamination in the cleanroom



Compromised cleanroom garments are one of the primary causes of alerts

⁽¹⁾Research by Kimberly-Clark PROFESSIONAL* and Hohenstein Institute

⁽²⁾2012 PDA Environmental Monitoring study



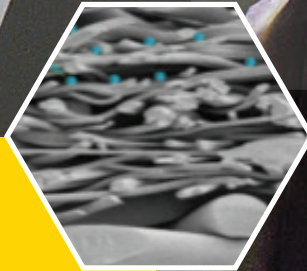
NOT ALL CLEANROOM GARMENTS ARE CREATED EQUAL

Kimtech* SMS (Spunbond/Meltblown/Spunbond) fabric provides strength, cloth-like comfort and a strong barrier for fine particles and liquids. Its middle layer act like filter which traps particles while maximising airflow to keep the wearer cool and comfortable. As the impact of gamma irradiation on the polymer occurs only one time, the properties are constant.

Laundered garments are subject to multiple wash, dry and gamma sterilisation cycles which deteriorates the material's capability to filter particles and leads to higher risks of contamination. It's not only important to review what comes off from the garment, but what also comes through the garment and can impact the environment. As the number of cycles (wash, dry, sterilisation) increase, the bacterial filtration efficiency continues to decline.

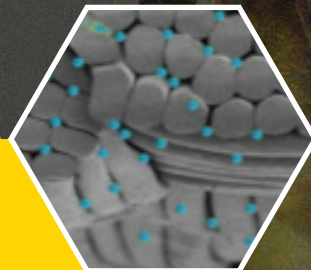
Kimtech* SMS fabric

Maze-like pathways prevent bacteria from passing through



Laundered Garment

Channels for bacteria to pass through



OUR SOLUTION

Kimtech* PURE A5 Sterile Cleanroom Coverall not only protects your processes but keeps your workers comfortable and safe:



Advanced CLEAN-DON*
Technology for easy and
compliant aseptic donning



Vacuum packed to enhanced
sterility assurance (SAL 10⁻⁶)



Constant Bacterial
Filtration Efficiency



Light and breathable
cloth-like fabric



KIMTECH PURE* A5 STERILE CLEANROOM COVERALL WILL GET YOU DRESSED FOR SUCCESS!

Featuring **CLEAN-DON*** Technology for simple, safe and efficient aseptic gowning:

- Presented unzipped with inside-out fold
- Blue indicator line to avoid touching outside
- Arms and legs telescope folded with snaps

Enhanced Comfort and Protection:

- High performance breathable SMS fabric
- Waist and back panel elastics
- Elastics cuffs and built-in thumb loops

EU GMP ISO 5 Grade A cleanroom compatible:

- Low Lint Fabric, Helmke Drum test Category I
- Vacuum packed and double bagged for added sterility assurance.



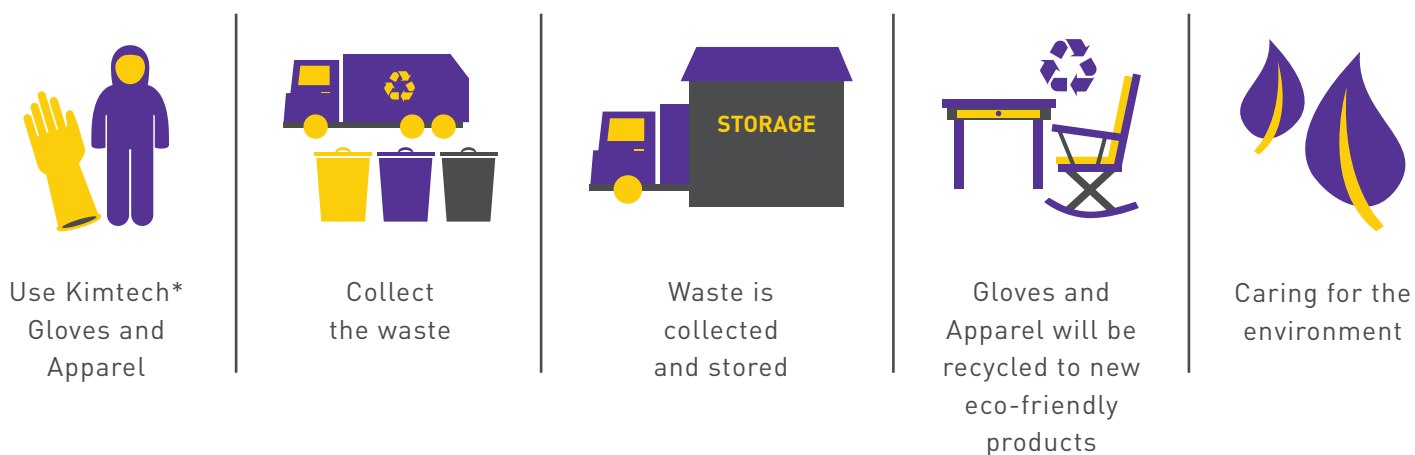
KIMTECH PURE* A5	Size	Code	Case Count
Sterile Coverall	S	88800	25
	M	88801	25
	L	88802	25
	XL	88803	25
	2XL	88804	25
	3XL	88805	25
	4XL	88806	25
Sterile Hoods	Standard	88807	100
	Mask Integrated	36072	75
Sterile Over boots with wrap-around vinyl foot	Small	31683	100 pairs
	Universal	31696	100 pairs
Sterile Over boots with anti-slip vinyl sole	Small	88808	100 pairs
	Universal	12922	100 pairs

KIMBERLY-CLARK PROFESSIONAL* introduces RightCycle*, a true end-to-end solution that turns previously hard to recycle non hazardous material into eco-friendly products

Kimtech* Solutions and RightCycle* is the ideal combination to achieve your Business and Sustainability Goals



RightCycle* in Action



Contact kimtech.support@kcc.com for a free consultation or find out more on our website www.kimtech.eu/sustainability

Availability of RightCycle* might vary by country. Send an email to kimtech.support@kcc.com to find out if it is available in your country. Only non-hazardous garments and gloves can be recycled. Bio-contaminated garments can be recycled after autoclaving.